


10Gbps WebSmart Multi Gigabit POE++ Switch

12-Port Multi Giga incl 8x 10G RJ45 PoE+/++ , 4x 10G SFP+ WPOE-10TX804-260 BT

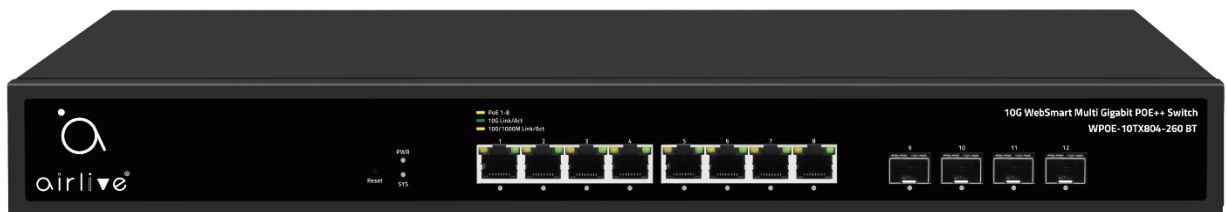
airlive®

	100M/1G/2.5G/5G/10G RJ-45	Web Managed	QoS	Multi-Gigabit Auto-negotiation	Works with Cat6e/6a or up cables	
	1G/2.5G/10G SFP+	PoE Watchdog 802.3bt 90W support	VLAN	Loop Protection	Surge/ESD protection	

Overview

10G Super High speed with PoE+/++ Web Management

The AirLive Multi-Giga switch, WPOE-10TX804-260 BT, is a WebSmart Managed switch, which supports 8x 10G PoE (4x 90W (802.3bt)+ 4x 30W (802.3at)) RJ45 ports and 4x SFP+ ports for delivering up to 10Gbps extra high-speed connection. Each port can auto-adaptively deliver speed at 100M/1G/2.5G/5G/10G on RJ45 and 1G/2.5G/10G on SFP+ to connected devices. The total PoE power is 200W which can power on several PoE++ devices like the new Wi-Fi 7 Access Points, IP Cameras and Digital Signage products. It supports WEB Management function and is easy to manage and maintain. The easy to operate WPOE-10TX804-260 BT has several functions like VLAN setting for a more secure connection. QoS to have more control of the bandwidth and many more like, IGMP, Loop Prevention, Port-Base Mirroring, Port Isolation, Bandwidth Control, Security (MAC Address /table /search/static MAC; Storm control and more. With the 10G multi-Giga switch, you can connect to a variety of 10GbE-enabled devices, such as NAS | NVR | PC | Server, for enjoying faster experience and handle bandwidth-hungry applications. Designed in a slim sized solid housing, it's an affordable, space-saving solution suitable to Home and SMB network applications.



100M/1G/2.5G/5G/10G
802.3bt 90W PoE RJ-45, Port 1~4
802.3at 30W PoE RJ-45, Port 5~8

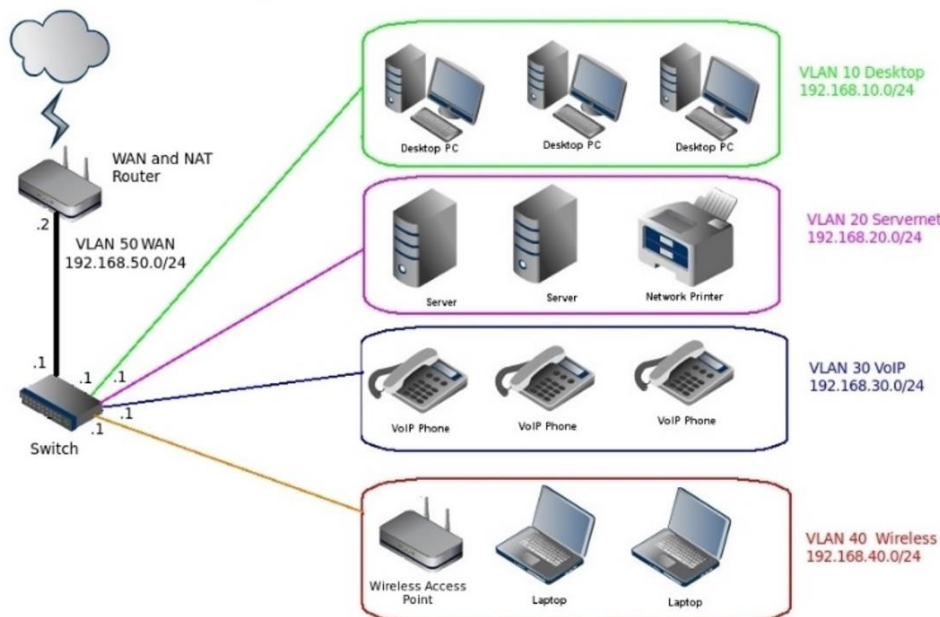
1G/2.5G/10G
SFP+ Port

Features and Specifications

- 4 x 90W PoE 100M/1G/2.5G/5G/10G RJ45
- 4 x 30W PoE 100M/1G/2.5G/5G/10G RJ45
- 4 x 1G/2.5G/10G SFP+
- Max. 200W PoE Power
- Web Smart Management
- QoS; Priority management
- VLAN: enhanced security and performance
- Loopback Detection
- All ports at Multi Gigabit high speed, auto-negotiation
- Providing satisfied bandwidth for various network devices, such as online gaming, multi-media, NAS, Server system
- Super Fast 10Gbps RJ-45 and SFP+
- Existing Cat5e cable suitable (Cat6a needed for 10G), painless upgrading
- PoE management, PoE Watchdog
- 802.3bt/802.3at/802.3af compliant

VLAN for enhanced network security

The VLAN 802.1Q VLAN tagging settings can be used to separate traffic within a business such as isolating resources between network administrators and general users or between employees and public guest users. With the help of VLAN interface, switches can communicate with other network layer devices.

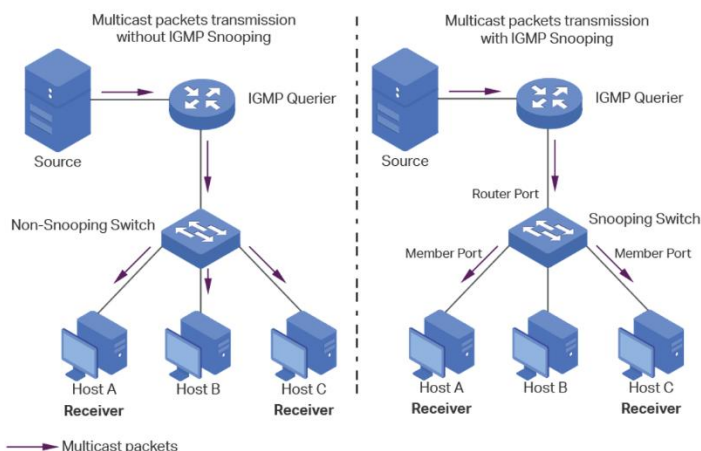


QoS for enhanced traffic control

QoS (Quality of service) is the ability to provide different priority to different applications, users, or video/voice/data flows, or to guarantee a stable level of performance to each data flow. This can be with Port-based Priority or Priority to queue.

IGMP Snooping Multicast

Multicast protocols is compliant with IGMP v1/v2/v3 and supports abundant multicast features such as IGMP v2/v3 snooping and fast leave. By analyzing the IGMP messages received, L2 devices establish a mapping between ports and MAC multicast addresses and forward the multicast data accordingly.



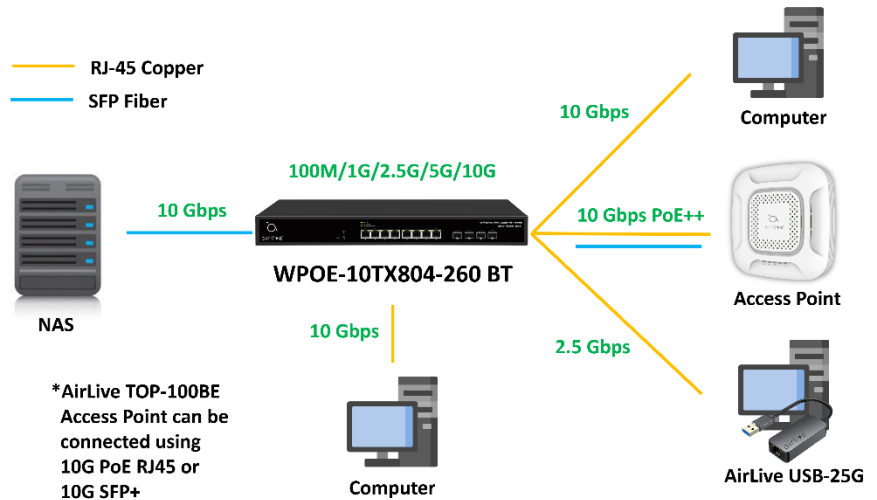
High Video Streaming

Moreover, higher bandwidth improves the playback quality of 4K/8K videos, prevents lag for Gaming, smooths speed when download or upload large data, increases data transfer speed when doing backup to a NAS drive.



1G/2.5G/5G/10G PoE RJ-45 and SFP+ Multi Gigabit perfect for various applications

With the AirLive 10G Multi-Giga switch WPOE-10TX804-260 BT, you can connect to a variety of 10GbE-enabled devices, such as Access Point | IP Camera | NAS | NVR | PC | Server and more, the RJ45 and SFP+ ports are fully auto adaptive and can also work at multiple speeds for enjoying faster experience and handle bandwidth-hungry applications.



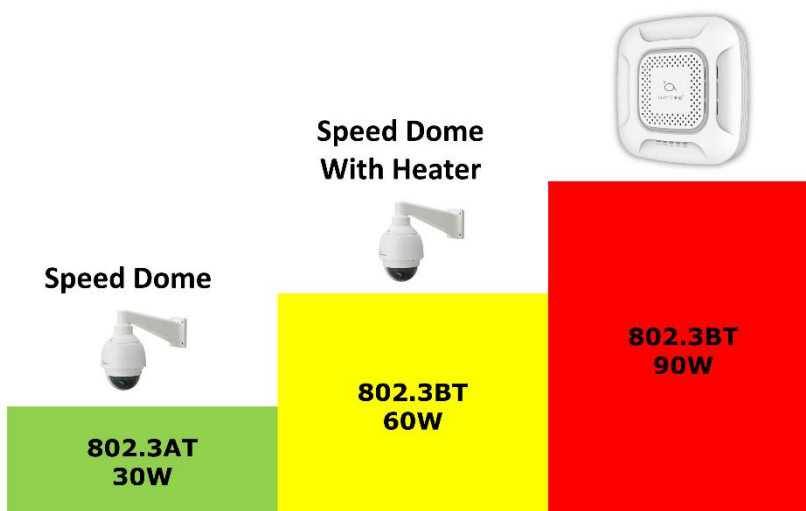
Built for High-Speed connectivity

802.3BT High Power PoE

AirLive Power over Ethernet (PoE) products are suitable for commercial and industrial applications which provide highly reliable power and data transmission in compliance with the 802.3bt standard and the unique intelligent PoE watchdog control function can meet all the requirements of IP surveillance, IP communications, POS systems, PoE lighting and other applications.

AirLive WPOE-10TX804-260 BT supports the high-power output PoE++ at 90W for ports 1~4 and PoE+ at 30W for ports 5~8. The higher 90W output allows it to power more device than just an IP camera or Wi-Fi 5/6 Access point. The 90W PoE can be used to power on high power needed PoE Systems, Like the AirLive TOP-100BE Wi-Fi Access Point has a 10G RJ45 WAN port and require 802.3bt 90W power to work, Other products that need high power are Digital Signage or PoE LED lighting and much more. The new range of 10G PoE switches with 802.3bt and 802.3at support offer you more flexibility on the usage.

Wi-Fi 7 Access Point



Model	AirLive WPOE-10TX804-260 BT
Hardware <ul style="list-style-type: none">• Device Interface: 4 x 100M/1G/2.5G/5G/10G PoE 90W RJ45 Ports 4 x 100M/1G/2.5G/5G/10G PoE 30W RJ45 Ports 4 x 1G/2.5G/10G SFP+ 12-port totally Auto MDI/MDIX• Standard IEEE802.3u 100Base-TX IEEE802.3ab Gigabit 1000Base-T IEEE802.3bz 2.5GBase-T IEEE 802.3an 10G Ethernet IEEE 802.3z 1000BASE-X Gigabit Ethernet (optical fiber) IEEE 802.3ae 10G Ethernet (optical fiber) IEEE802.3x Flow Control and Back Pressure IEEE 802.3ad port trunk with LACP IEEE 802.1D Spanning Tree Protocol IEEE 802.1w Rapid Spanning Tree Protocol IEEE 802.1p Class of Service IEEE 802.1Q VLAN tagging IEEE 802.1ab LLDP IEEE 802.3af 15.4W, IEEE 802.3at 30W, IEEE 802.3bt 90W• Lightning Surge / ESD Protection: Support Port Surge: Common Mode 4KV, Differential Mode 1KV. Electrostatic ESD: Contact 6KV, Air 8KV.• LED Indicators: PWR (power supply), SYS (System), Port 1~8: LED Green LED ON: 10G Link normal, Yellow LED ON: 1G/2.5G Link normal, POE Yellow LED ON Port 1~8: POE ON, Port 9~12 Green LED ON: 10G Link normal, Yellow LED ON: 1.25G/2.5G Link normal.• Mechanical: Solid Metal 19" 1U rack-mountable, Fan: 2x Power and PoE <ul style="list-style-type: none">• Protocol: IEEE802.3bt (90W, IEEE802.3at (30W), IEEE802.3af (15.4W)• PoE Power Output / PoE Port 1~4: Max. 90W• PoE Power Output / PoE Port 5~8: Max. 30W• PoE Power Output / PoE switch: Max. 200W• PoE Port Output Voltage: DC 44-57V• PoE Software Function: PoE Temperature, PoE Type/Level/ Power/Voltage/Current, PoE Switch, PoE Watchdog, PoE power BT/AF/AT adaptation Switch Architecture Performance <ul style="list-style-type: none">• Switching architecture: Store and Forward Switch Capacity: Back-plan up to 240Gbps Packet Forwarding Rate: 178.56Mpps Packet Buffer: 16Mbit MAC Address: 32K VLAN: VLAN range 1-4094, with a maximum active VLAN of 4K Jumbo Frame: Supported Transfer mode: Store and Forward MTBF:100000 hour	Web Management Software Function L2 <ul style="list-style-type: none">• Port Setting: Port Switch Configuration, Port Description Configuration, Port Speed Configuration, Port Duplex Configuration, Port Flow Control Configuration, Jumbo Frame, EEE• Link Aggregation: Support load balance policy; based on MAC and IP-MAC, Static and Dynamic Group, Support LACP Up to 8 groups• Storm Control: Broadcast Suppression, Unknown Multicast, Unknown Unicast• Port Mirroring: One to one monitor, Many to one monitor, Ingress/Egress/Both, Up to 4 session groups• Port Security: MAC Address Constraints, Protect/Restrict/Shutdown• Port Isolation: Supported• Port Rate-limit: Supported• VLAN: Access/Trunk/Hybrid, VLAN Tunnel (Q-in-Q Tunnel), VLAN range 1-4094, maximum active VLAN is 4K• MAC Address: Filtering MAC Address, Static MAC address• LLDP: Support: LLDP, LLDP MED• Spanning Tree Protocol: STP/RSTP/MSTP, BPDU Filter, BPDU Guard, Edge Port• Multicast: IGMP Snooping, Router Port, Static IGMP Group address, IGMP V1/V2/V3• QoS: Traffic classification, Supporting SP and WRR scheduling, Port Priority, 802.1P Priority, IP DSCP Priority, Priority Remarking, Supports up to 8 queues per port• ERPS: Support Main Ring• Loopback Detection: Supported• Access Protocol: HTTP, Session Timeout• Security: DHCP Snooping• Copper Test: Supported• Ping: Supported

* Specification will be changed without prior notice

* All trademarks, logos and brand names are the property of their respective owners.

AirLive

Model	AirLive WPOE-10TX804-260 BT
Management <ul style="list-style-type: none">• Manager Access: HTTP, SNMP• Time Synchronization: SNTP, Manual Time• Manager IP: Static Address, Manager VLAN, DNS, DHCP Client• SNMP: V1/V2C/V3, Community, V3 User, Group, Trap host• SNMP MIB: RFC 1213 MIB-II, RFC 1643 Ethernet MIB, RFC 2863 Interface MIB• User Management• Firmware Management: Firmware Upgrade• Configuration Management: Upload/Backup Configuration• Save, Restart• Factory Defaults Transmission Distance <ul style="list-style-type: none">10Base-T: Cat3,4,5 UTP(≤100 meter)100Base-TX: Cat5 or later UTP(100 meter)1000Base-TX: Cat5e or later UTP(100 meter)2500Base-TX: Cat5e or later UTP(100 meter)10GBase TX: Cat6a, Cat7 or above UTP/STP (100m)• Fiber Medium:<ul style="list-style-type: none">1000BASE-SX: 62.5μm MMF (Multimode optical fiber) (Minimum range: 2m~275m) or 50μm MMF1000BASE-LX: 62.5μm/50μm MMF (Minimum range: 2m~550m) or 10μm SMF (Minimum range: 2m~5km)2500BASE-X: G.652D SMF (Single-mode optical fiber) (Minimum range: 2m~500m or 2m~5Km)10GBASE-SR: OM1/OM2/OM3 or above MMF (Operating range: 2m~300m)10GBASE-LR: IEC and B1.1 and B1.3 SMF (Minimum range: 2m~10km)	Power <ul style="list-style-type: none">• Power Input: AC100~240VAC 50/60Hz (Internal DC 54V/3.7A & 12V/5A) 200W• Power Consumption PoE: PoE Total Power Max 200W• Power Consumption Switch: Maximum 48.75W Environment <ul style="list-style-type: none">• Operating Temperature: 0°C to +40°C• Storage Temperature: -40°C to +70°C• Working Humidity: 10%~90%, non-condensing• Storage Humidity: 5%~95%, non-condensing Standard package of switch <ul style="list-style-type: none">• Product size: 44.0 x 20.4 x 4.4 cm(L*W*H)• Package size: 50.0 x 29.0 x 8.5 cm(L*W*H)• Package Weight: N.W: 2.9kg; G.W: 3.48kg• Package content: 1 x Switch, 1 x Power cord, 1x Rackmount kit, 1 x QIG. Standard carton package <ul style="list-style-type: none">• Quantity: 5pcs / 1 carton• Dimensions 52.0 x 44.5 x 31.0 cm (L*W*H)• Weight 18.4kg (G.W) Ordering Information <ul style="list-style-type: none">• Model: WPOE-10TX804-260 BT• Name: 12-port 10Gbps WebSmart Multi Gigabit POE++ Switch, incl. 8 x 10G RJ45 PoE+/++ and 4x 10G SFP+, Plug and Play, Auto-Negotiation

* Specification will be changed without prior notice

* All trademarks, logos and brand names are the property of their respective owners.

AirLive